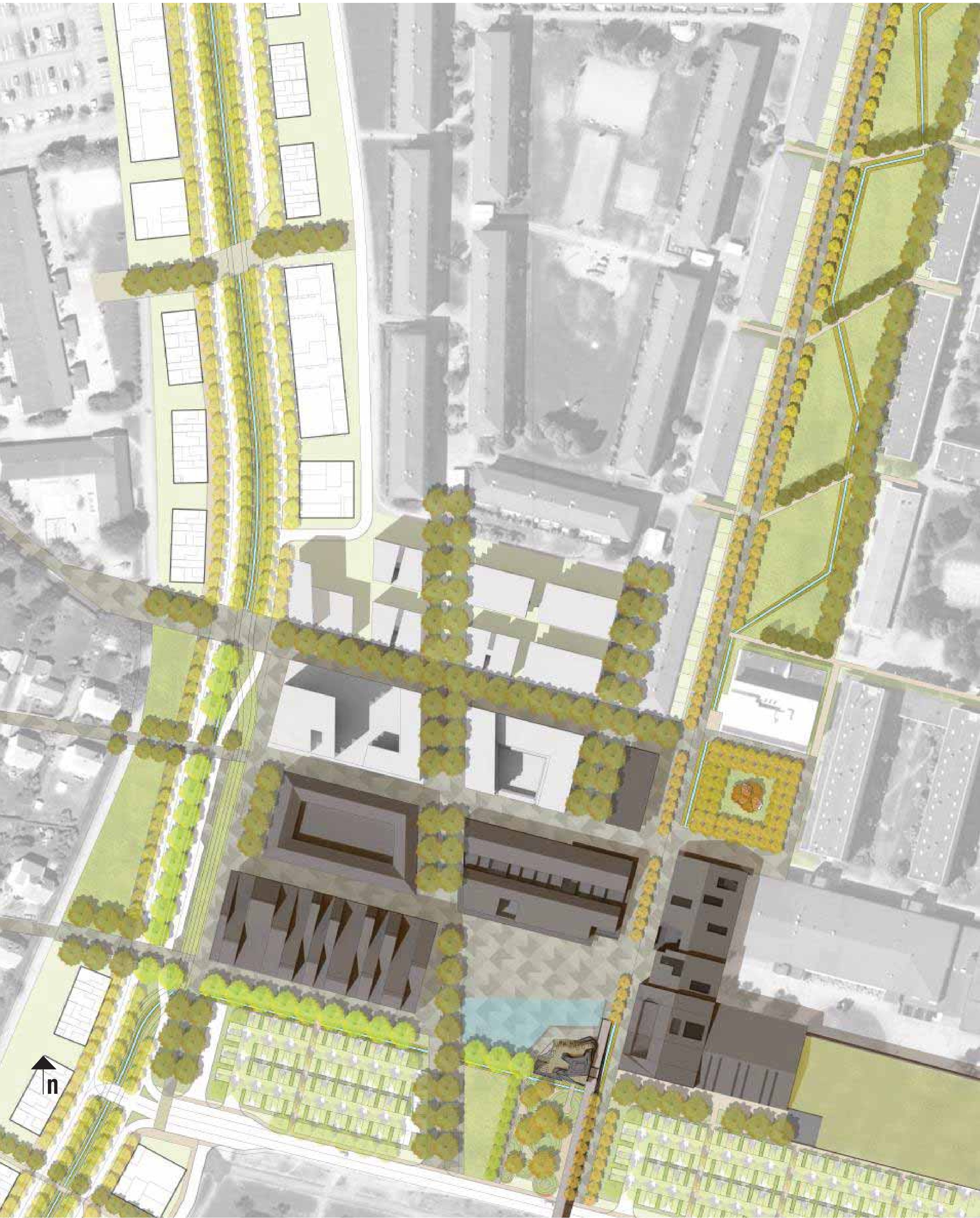
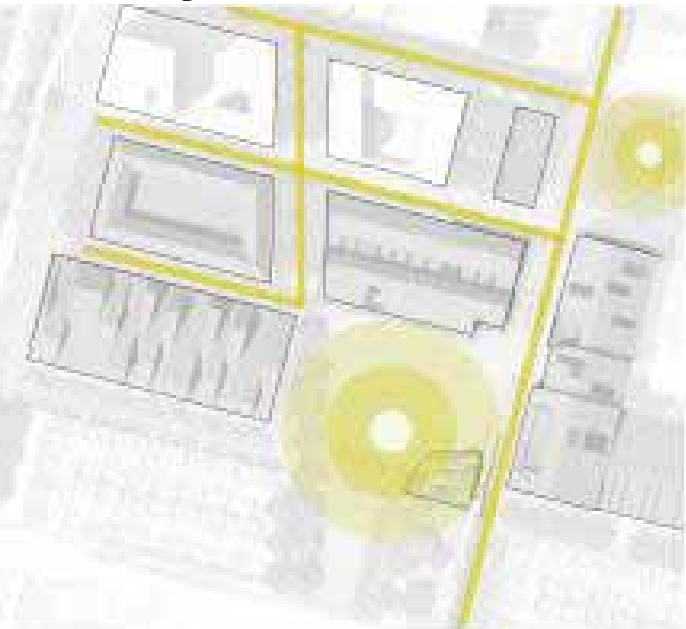


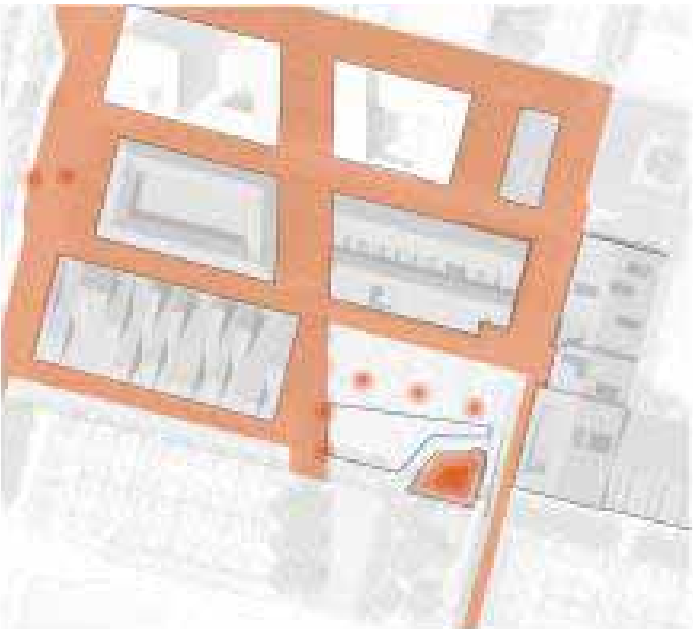
# Landscape + Framework Plan 1:1000



## Site systems



Lighting



Warming huts + radiant heating



Thermal pavers + photovoltaic panels

## Site programme



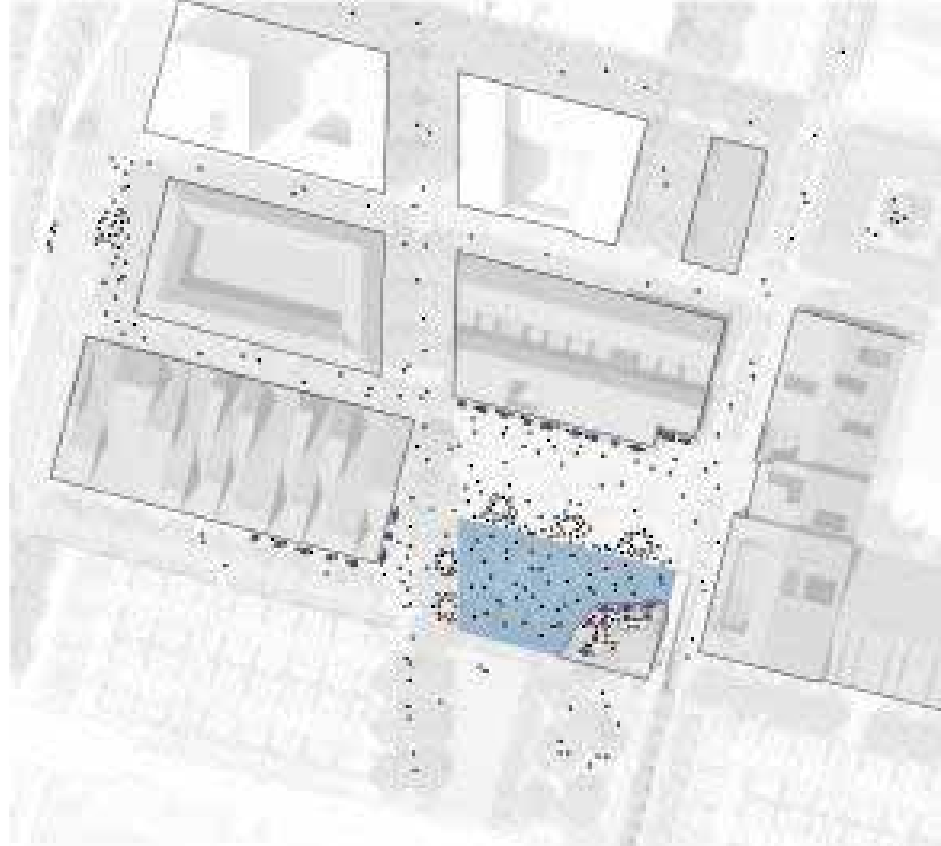
## Site occupation



summer\_market day + splash pad



summer\_concert event / festival



winter\_ice skating rink

## Parks and open spaces



01 The *Greenmall Promenade* is the central north south connection to the Torg. A structure of lateral paths, a winding bioswale, and coniferous wind rows create a series of flexible spaces that can accommodate a number of neighbourhood park facilities.

02 *Litterature Park* links to the new Torg while buffering residents in the villa's to the west. A structure of trees and illuminated paths define a series of flexible spaces that can accommodate more neighbourhood park facilities.

03 *Selma Lagerlöf's Torg* is re-imagined as a quiet respite and sister square to the new Torg. Bounded by the Library and the new Ballet School, the space is sheltered by a new bosquet of birch trees and buffered on the west by a section of the bioswale.

04 The *Market Green* offers a flexible lawn area for picnic's on market day. Adjacent is a large adventure play area for neighbourhood children and visitors alike. Adjacent to the new Torg, the play area is overlooked by a terrace on the granite mound.

05 The school soccer field is replaced on top of a new 2 level parking structure.

Building from the tradition of Swedish post war neighbourhood planning, the centre of the new Selma offers a network of pedestrianized public areas radiating out from the central Torg, and connecting to close by nature areas.

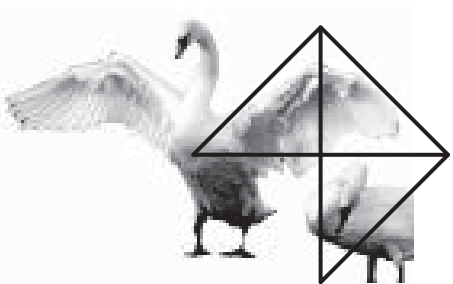
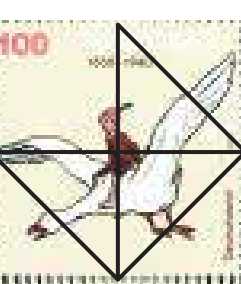
## Bioswale



01 historic creek alignment  
02 proposed bioswale alignment  
03 overlay map of historic creek

A new district bioswale flows down the centre of Litteraturgatan, runs through the new Torg, and zig-zags through the Greenmall Promenade before joining the creek that runs into the river. The bioswale treats, infiltrates and conveys neighbourhood storm water, a 21st century re-creation of the creek that once ran along the neighbourhood valley floor.

## Paving pattern



The granite pavement pattern is derived from Selma Lagerlöf's classic children's story *Nils Holgerssons underbara resa genom Sverige* (1906)

## Tree planting

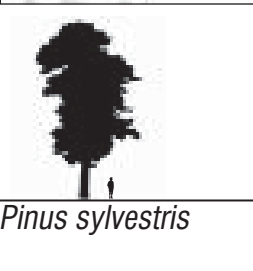


Wind breaks



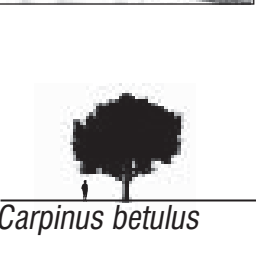
*Picea abies*  
*Larix decidua*

Alpine groves



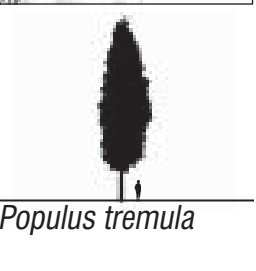
*Pinus sylvestris*

Parking Orchard



*Carpinus betulus*

Farmlane row



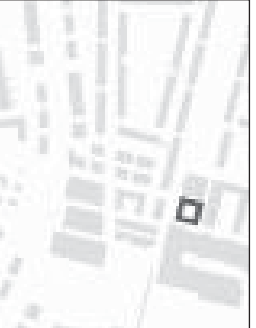
*Populus tremula*

Promenade allée



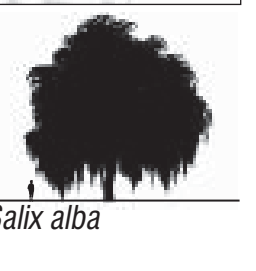
*Alnus glutinosa*

Torg bosquet



*Betula pendula*

Creekside willows



*Salix alba*

Structure plantations



*Tilia cordata*  
*Aesculus hippocastanum*



# The Torg 1:400

## THE CORE: PROGRAMME AND PHASING

Selma's core is the heart of the community. Our approach to Selma is to reinforce the centre through an expanded pedestrian area and new Torg designed as a large scale gathering space with an open southern exposure. This new 'sister' Torg is bounded by three landmark buildings. These buildings include:

### 1. Food Palace

The Food Palace is a hub for all things food related. In addition to providing fresh, local and ethnic food, the food palace hosts weekly and specialty markets, operates a community kitchen, health training, cooking school, and organizes Selma's community gardening projects. Additional programme includes convenience retail, café, and restaurant run by local chefs trained at the centre specializing in healthy and local food.

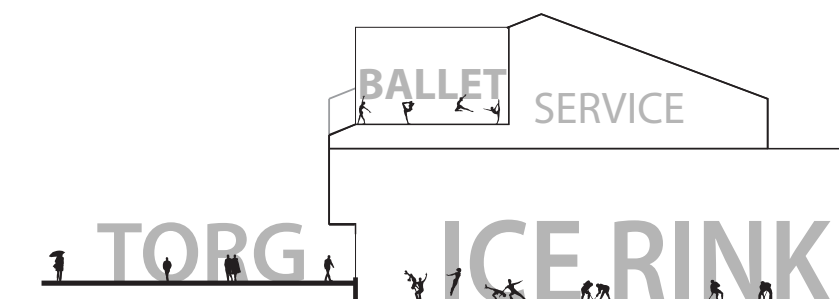
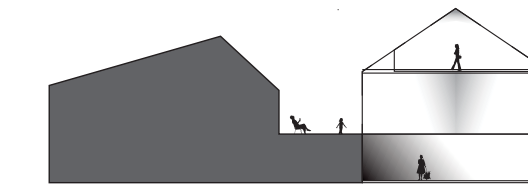
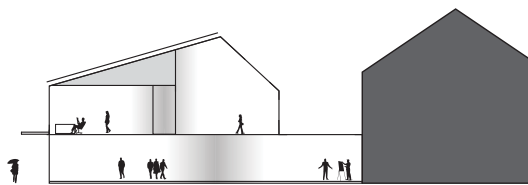
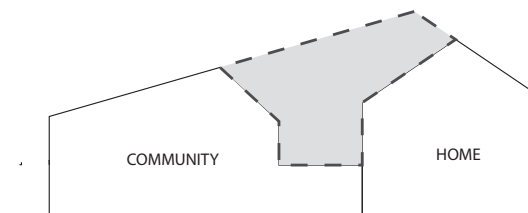
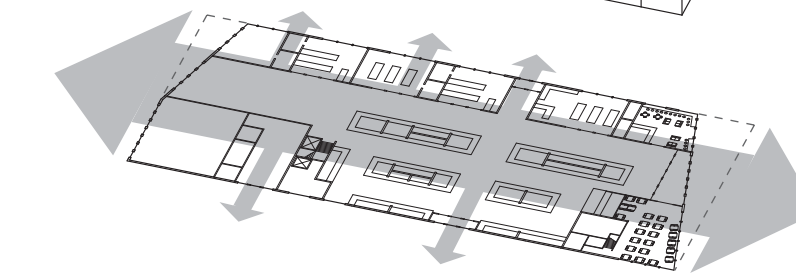
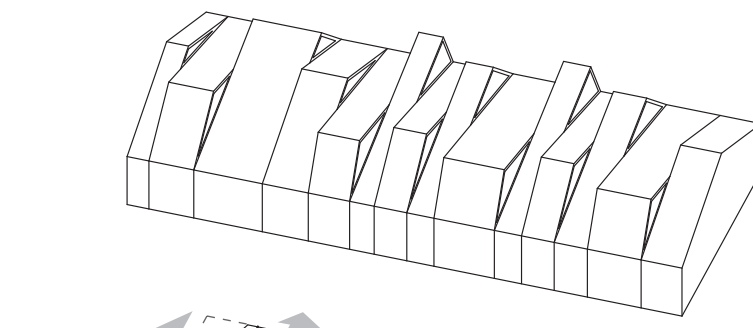
### 2. Community Innovation Centre

In the Centre of the new Torg is the Community Innovation Centre, a mixed-use facility with a wide range of community programmes with residences above. This facility acts as the core community centre, housing the Framtidens offices, community meeting rooms, childcare facilities and playgrounds, as well as a neighbourhood Restaurant and roof terrace.

With a specific focus on those new to Sweden, the Centre houses offices for newcomer settlement services, childcare, multi-faith rooms, flexible commercial space for newcomer entrepreneurs, and training facilities. To further aid local enterprise and innovation, the centre includes a business incubator to help residents establish small scale enterprises. Artist studios and galleries plant the seeds for Selma to emerge as a cultural hub.

### 3. Dance + Ice Palace

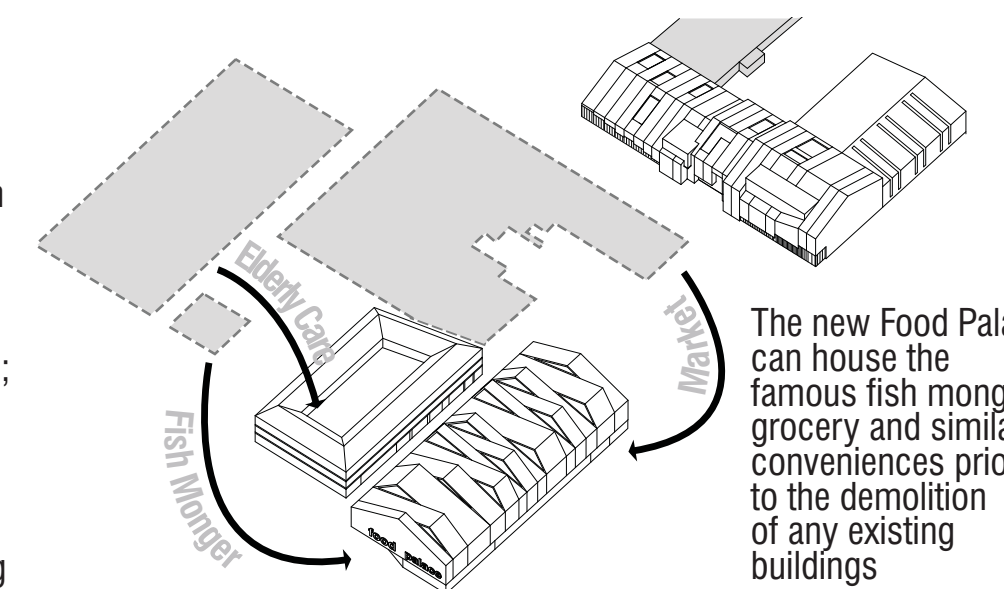
The Dance and Ice Palace is a significant expansion to the school, housing the National Ballet school, figure skating and hockey facilities, full gymnasium, pool and sauna, as well as a new court yard for school use. These facilities offer programmes in dance, skating and fitness for the entire community. A new parking structure to the east contains a green roof sports field for the use of the school and wider community.



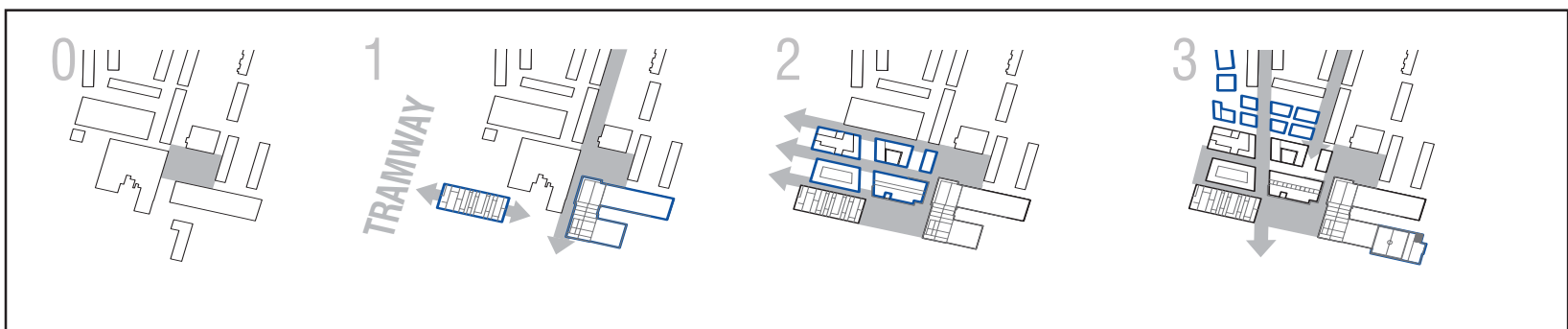
### Phasing

The plan for the core area of the district has been designed to allow for incremental change with minimum disruption. Redevelopment may consist of the following phases:

1. Food Palace built within car park, Ballet / Ice Palace integrated into school;
2. Current commercial building replaced with Community Innovation Centre, mixed housing and retail;
3. Current elderly care and retail building replaced with terrace housing

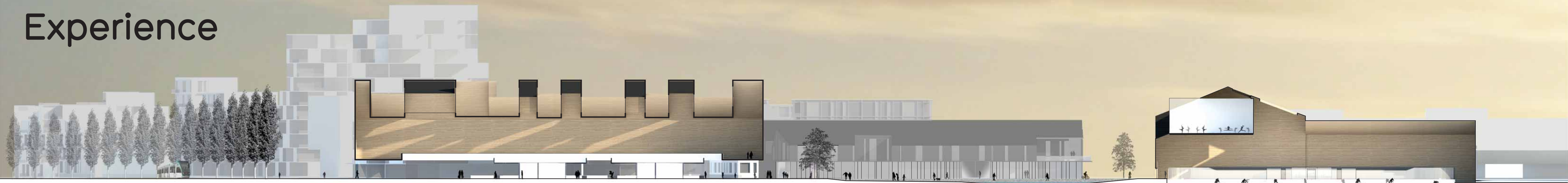


The new Food Palace can house the famous fish monger, grocery and similar conveniences prior to the demolition of any existing buildings





# Experience



Section East / West



Section North / South