



# EU Data Boundary for the Microsoft Cloud

Background, recap, and updates

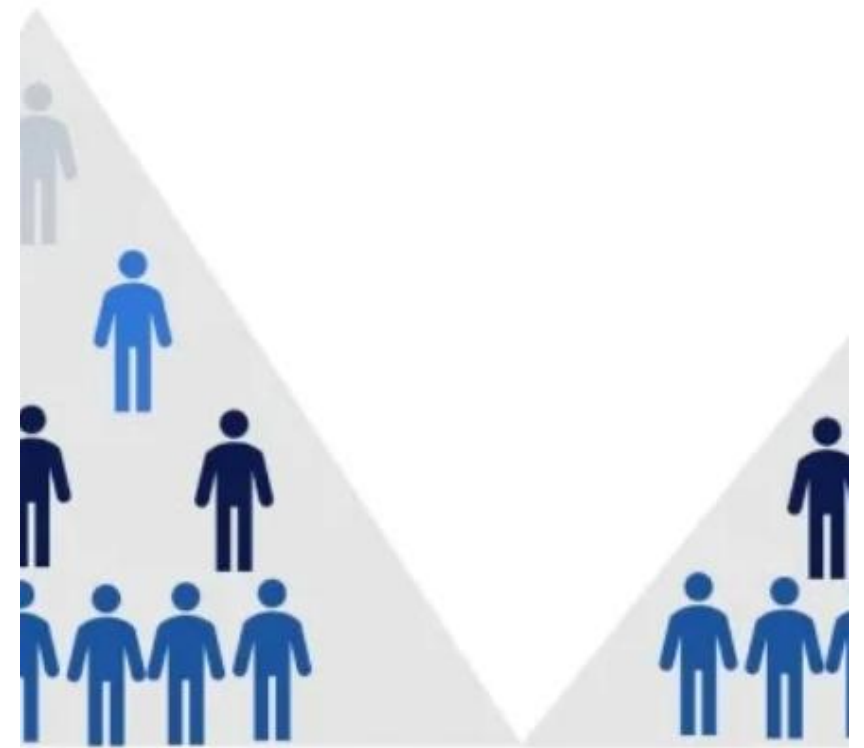
February 18, 2025



# Tekniska, organisatoriska och juridiska skydd vid datahantering

---

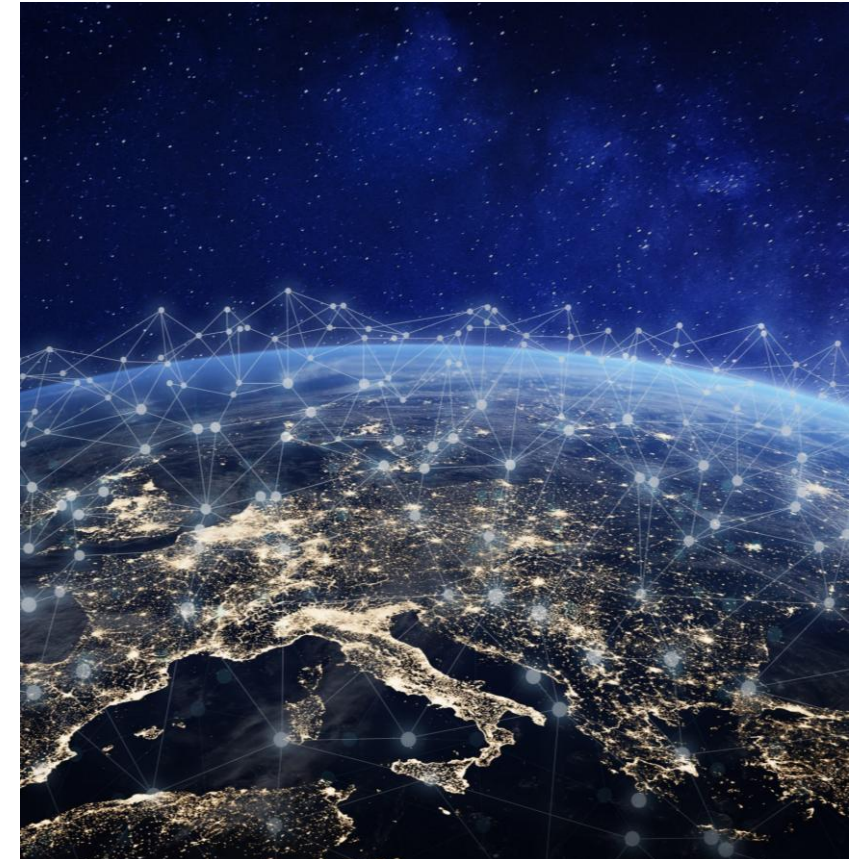
- **Organisatoriska:** Partnermoln.
  - Exempel: Bleu <https://www.bleucloud.fr/>
- **Tekniska:** End-to-end encryption (E2EE) i Teams
- **Tekniska:** Microsoft Cloud for Sovereignty
- **Organisatoriska:** Data center region i Sverige
- **Juridiska:** Standard Contractual Clauses etc...
- **Tekniska/organisatoriska:** EU Data Boundary



# EUDB

---

- Dataöverföringar mellan EU och USA kan göras på olika sätt
  - Adekvansbeslut mellan EU/USA (DPF)
  - Tekniska skyddsåtgärder vid överföringen
  - SCC
  - Etc..
- Men om det är många dataöverföringar som görs så kan det ta lång tid att analysera
  - För det tog vi bland annat fram MSMD AIR (Analys, Införande och Risk)
- Om data skulle kunna stanna inom EU så blir analysen lättare.
- Samtidigt finns det olika typer av data.
  - Kunddata (som lagras i tjänsterna)
  - Tjänstegenererad data som skapas när tjänsterna används
  - Support data som kan skapas vid supportärenden
  - Säkerhetsdata som används för mitigering av cyberattacker
- Därför har EUDB lanserats i olika faser.



# EU Data Boundary

## Overview

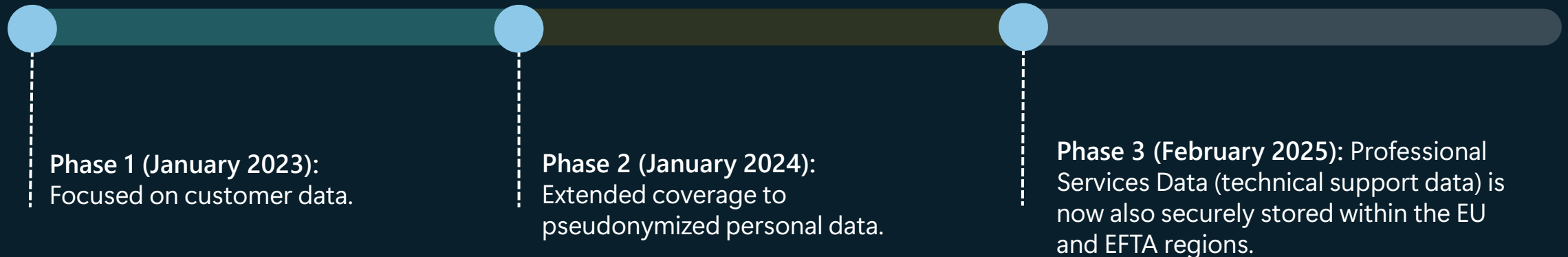
### Commitment

The EU Data Boundary is a promise by Microsoft Online Services to provide customers in the EU and EFTA with greater control and transparency over where their data is stored and processed.

### Objective

Align with European digital values and needs, emphasizing data protection and bolstering user trust.

### Initiative rollout



# Några undantag

- Säkerhetsdata
- Vissa tjänster



Learn

Discover ▾

Product documentation ▾

Development languages ▾

Topics ▾

 Filter by title

What is the EU Data Boundary?

Continuing data transfers for all services

▾ Continuing data transfers for specific services

Continuing data transfers for specific services

Temporary partial data transfers

Ongoing partial data transfers

Optional service capabilities

Temporarily excluded services

Excluded services

Configuring Azure non-regional services

Documentation change log

[Learn](#) / [Privacy](#) / [EU Data Boundary](#) /



## Continuing data transfers that apply to all EU Data Boundary Services

Article • 02/26/2025 • 1 contributor

 [Feedback](#)

### In this article

[Remote access to data stored and processed in the EU Data Boundary](#)

[Customer-initiated data transfers](#)

[Professional Services Data](#)

[Protecting customers](#)

[Services in preview/trials](#)

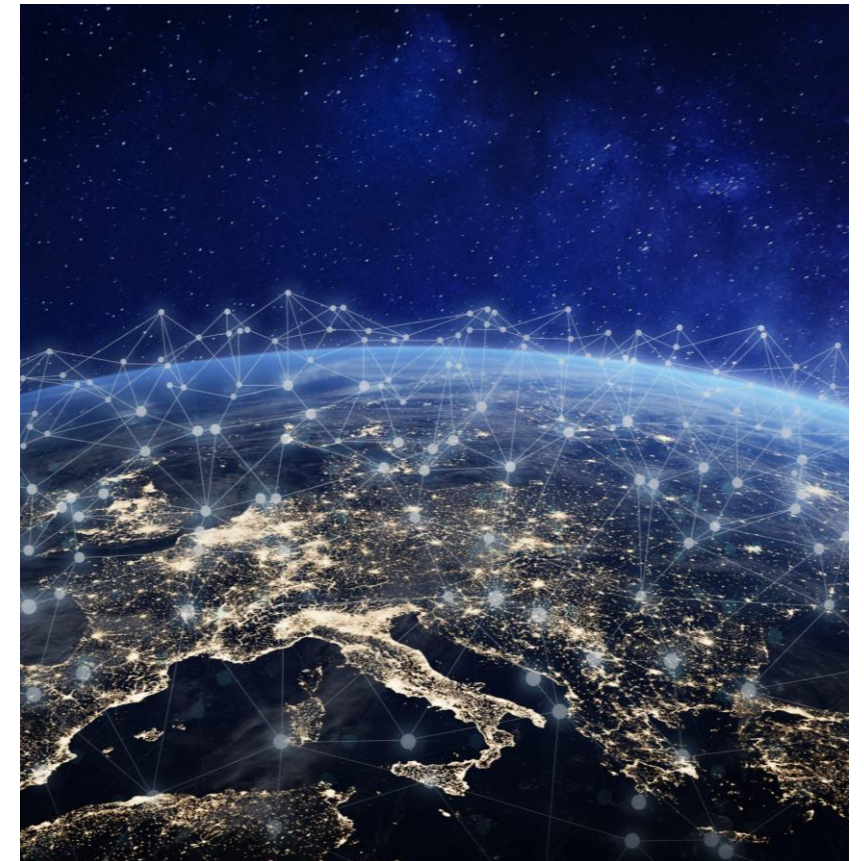
[Deprecated services](#)

[On-premises software and client applications](#)

[Directory data](#)

[Network Transit](#)

[Service and Platform Quality, Resiliency, and Management](#)



# Key benefits

This new solution will bring a number of benefits to our customers, including:

Compliance with EU regulations	Support for European values	Additional data residency	Enhanced data control	Increased transparency
<p>The EU Data Boundary goes beyond current regulatory requirements and simplifies the regulatory risk assessments EU and EFTA customers must perform.</p> <p>With Phase 3, storage of professional services data is now included, further aligning Microsoft's services with European data protection standards.</p>	<p>The EU Data Boundary enables customers to have greater control over their data, including the ability to store and process personal data fully within the EU and EFTA.</p> <p>Phase 3 reinforces our commitment to Europe's high privacy standards by including professional services data.</p>	<p>Customer data and pseudonymized personal data for Microsoft 365, Dynamics 365, Power Platform, and Azure will be stored and processed within the EU and EFTA. And now, professional services data will also be stored within the EU and EFTA.</p> <p>This greatly reduces data flows outside the region.</p>	<p>Microsoft is committed to supporting European digital needs and values, and the EU Data Boundary is aligned with our European Cloud principles.</p> <p>By adding professional services data to the EU Data Boundary in Phase 3, we ensure even more robust data residency and minimize out-of-region data handling.</p>	<p>Microsoft is committed to providing updated, detailed documentation on the EU Data Boundary commitments.</p> <p>Any limited transfers of customer data—including professional services data—are outlined on the EU Data Boundary Trust Center page, reinforcing our dedication to clarity and accountability.</p>



# Compliance with EU regulations

The EU Data Boundary is designed to help customers meet their regulatory requirements. With the completion of Phase 3, Microsoft has further aligned its services with Europe’s most stringent data protection laws, including GDPR. This ensures that **professional services data**, in addition to **customer and pseudonymized personal data**, remains protected within the EU and EFTA regions.



## Adheres to strict EU regulations

Microsoft’s EU Data Boundary goes beyond simply meeting compliance—it meets or exceeds the highest standards set by European regulators.

## Aligns with GDPR guidelines

Each phase of the EU Data Boundary rollout, including Phase 3 for storage of professional services data, is designed to meet GDPR principles regarding data minimization, retention, and access regulations.

## Ensures data protection and privacy

By extending protections to storage of professional services data under Phase 3, Microsoft provides enhanced privacy measures that keep customer and support interactions safeguarded at all times.

## Provides contractual security for EU data storage and processing

Microsoft guarantees contractual assurances that customer data and pseudonymized personal data remains stored and processed and professional services data remains stored within the EU and EFTA regions, with clear, legally binding commitments to protect privacy and security.

# Understand the EU Data Boundary Roadmap

## EU Data Boundary phased roll out

### Phase 2 | Jan 1, 2024 ● Pseudonymized personal data

Extension of the initiative to include pseudonymized personal data.

Enhanced data protection and [transparency](#) for customers regarding data transfers.

### Phase 3 | Feb 2025 ● Professional services data

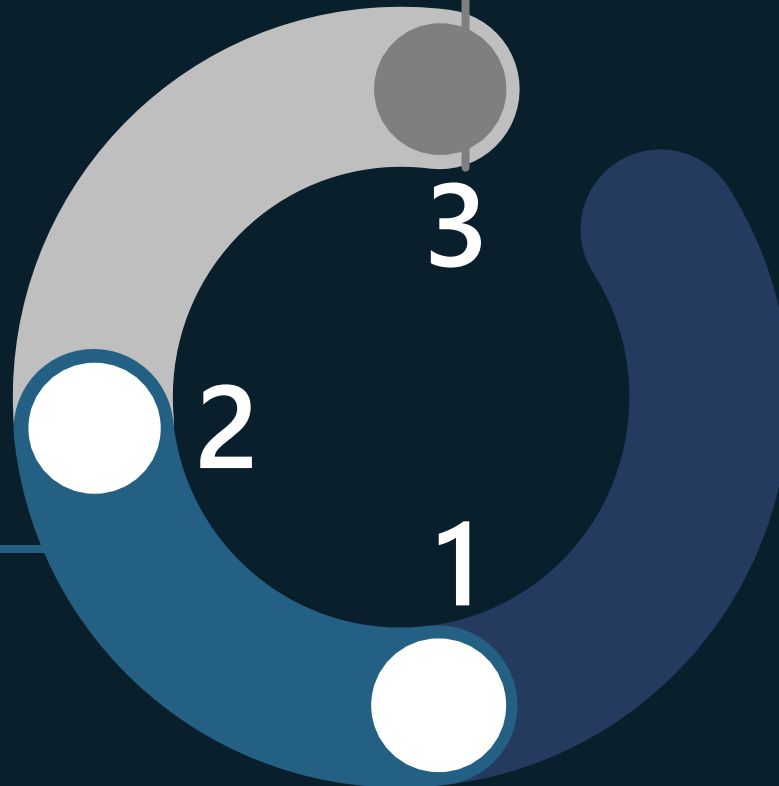
Storage of professional services data from technical support interactions within the EU Data Boundary.

### Phase 1 | Jan 1, 2023 ● Customer data and documentation

Microsoft's commitment to store and process customer data within the EU and EFTA regions.

Introduction of the [EU Data Boundary Trust Center Page](#)

Phase 1 brings by far the largest portion of your personal data into the scope of the EU Data Boundary.





# EU Data Boundary and Microsoft's Global Security Operations Overview

## EU Data Boundary and Global Security

- To protect against global cyber threats, Microsoft runs comprehensive security operations around the world.
- While our EU Data Boundary retains the majority of data within EU and EFTA regions, limited data transfers may be required to counter sophisticated threats or conduct global threat intelligence.
- Cross-boundary data analysis supports automated security detection and rapid responses, helping safeguard customers against evolving cyber risks.

## Benefits and commitment

- **Robust security measures:** We uphold strong security standards, safeguarding data and meeting strict EU and EFTA regulatory requirements.
- **Alignment with GDPR:** Microsoft's global security practices focus on protecting personal data in line with GDPR Article 32 and the EU Charter of Fundamental Rights (Article 6).
- **Secured transfers:** Any data processed outside the EU Data Boundary for security purposes is encrypted, pseudonymized, and restricted to authorized personnel, in compliance with Microsoft's contractual commitments.

# Product security – Data use and analytics

## Data management in Microsoft Security products

### Controlled access and purpose of use

Access to data, even when transferred outside the EU, is strictly limited to specialized security personnel. Our principal objective is to protect both infrastructure and user data with minimal, well-defined data usage.

### Capabilities with legal ramifications

Microsoft's use of advanced analytics, such as AI, can effectively neutralize threats. However, examples like identifying "impossible travel" or "low and slow" attack patterns highlight the delicate balance between cross-boundary data analysis and preserving individual privacy.

*All activities are bound by stringent data protection frameworks, ensuring compliance with EU and EFTA regulations.*



# Privacy-centric data management and security operations

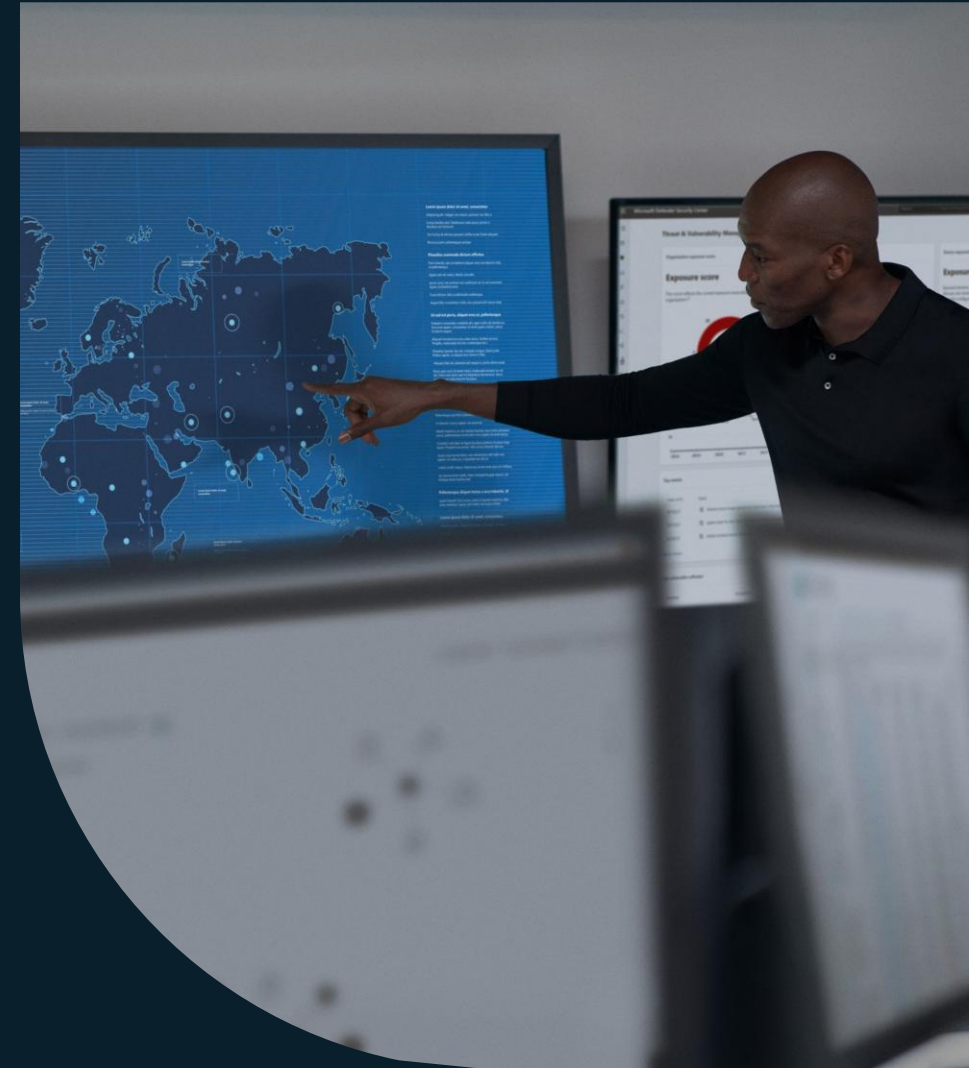
## Protecting privacy amidst global security operations

### Selective data transfer and storage

Microsoft's approach minimizes privacy intrusion by transferring only essential logs and configuration details. Data storage in regions outside the EU is reserved for specific threat detection objectives and strictly complies with the Data Protection Addendum (DPA) and relevant contractual commitments.

### Operational overview and data locations

Microsoft's internal security operations focus on safeguarding key platforms. Even though data may be routed through various advanced analytics, such as AI, to process security data, we maintain robust safeguards to effectively neutralize threats in line with EU data protection standards.



# How to get EU Data Boundary

## Steps to configure your service to the EU Data Boundary

Select your product	Then configure your information
<b>Azure</b> <ul style="list-style-type: none"><li>- Regional services</li><li>- Non-regional services</li></ul>	<b>Deployment or tenant location</b> <ul style="list-style-type: none"><li>- Choose EU deployment region</li><li>- Configure your tenant with ARM</li></ul>
<b>Dynamics 365 and Power Platform</b>	<b>Billing address</b> <p>Validate your billing address is located in the EU or EFTA</p>
<b>Microsoft 365</b>	<b>Sign-up location in EU region</b> <p>Validate your sing-up location is in a country or region in the EU or EFTA</p>

# Try EU Data Boundary for the Microsoft Cloud today

- Configure your tenant location, billing address, and service deployment regions
- Choose EU deployment region or configure tenant to the EU for Azure. Select tenant location in EU/EFTA for Microsoft 365, Dynamics 365 and Power Platform
- Visit the EU Data Boundary Trust Center page for key updates and information



Thank you

