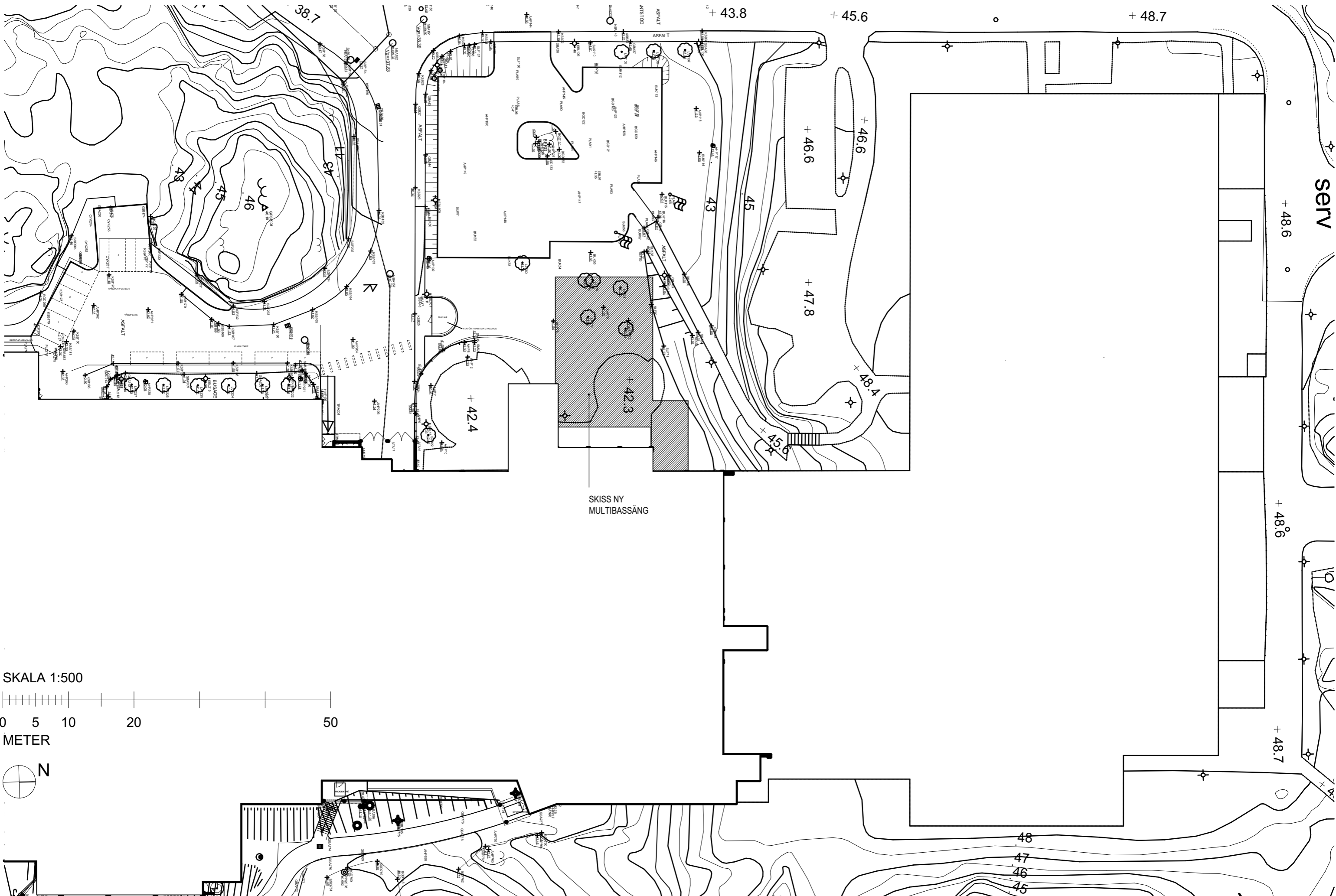


An architectural rendering of a new multi-bath facility. The building is a modern, multi-story structure with a mix of white and brown exterior panels. It features a large glass-enclosed area on the upper level, possibly a spa or lounge. The building is situated on a grassy slope with several trees. A paved area is visible in the foreground. The overall style is clean and contemporary.

TILLBYGGNAD NY MULTIBASSÄNG FRÖLUNDABADET

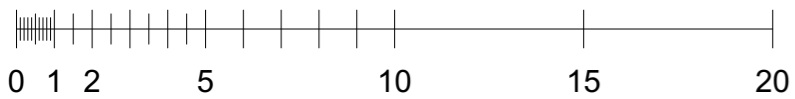
FÖRSTUDIE 2022-11-28



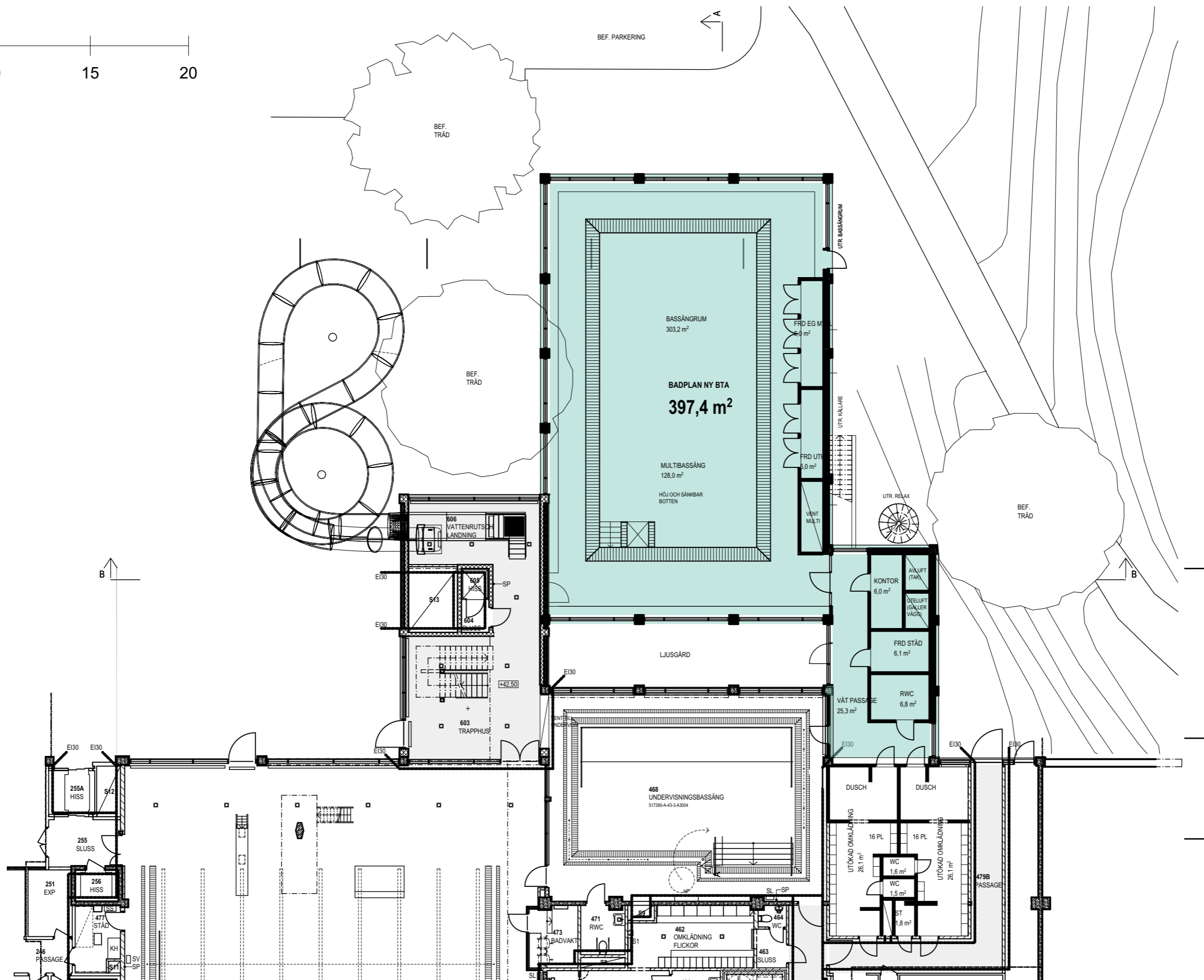
NY MULTIBASSÄNG FRÖLUNDABADET

SITUATIONSPLAN 1:500
Göteborg | 2022-11-28

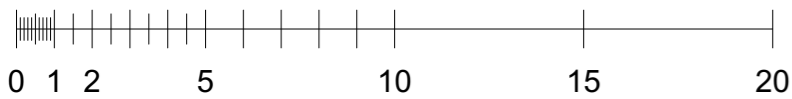
SKALA 1:200



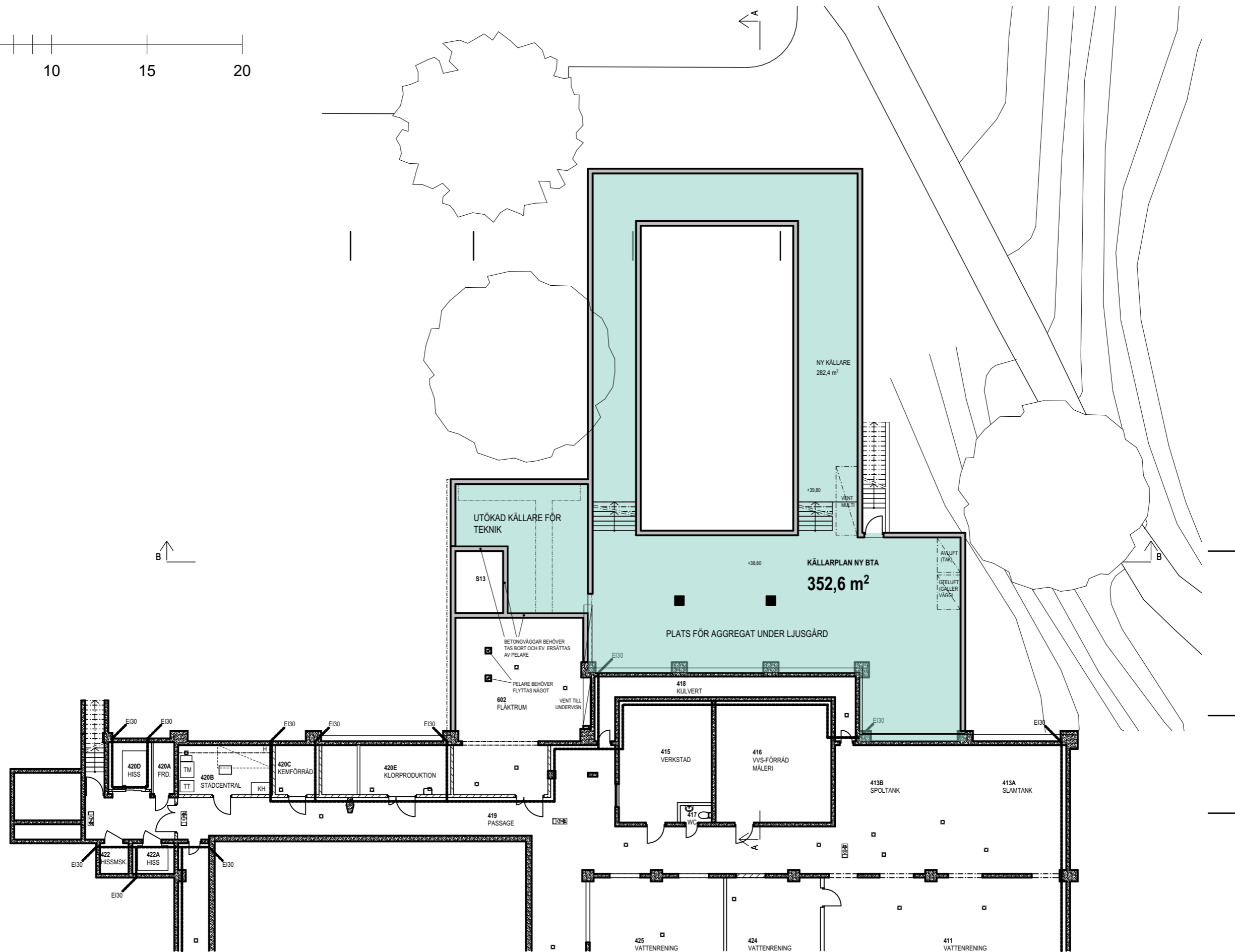
METER



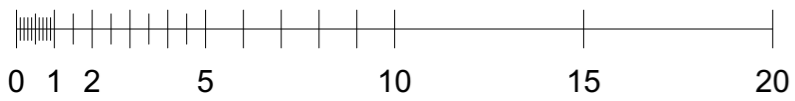
SKALA 1:200



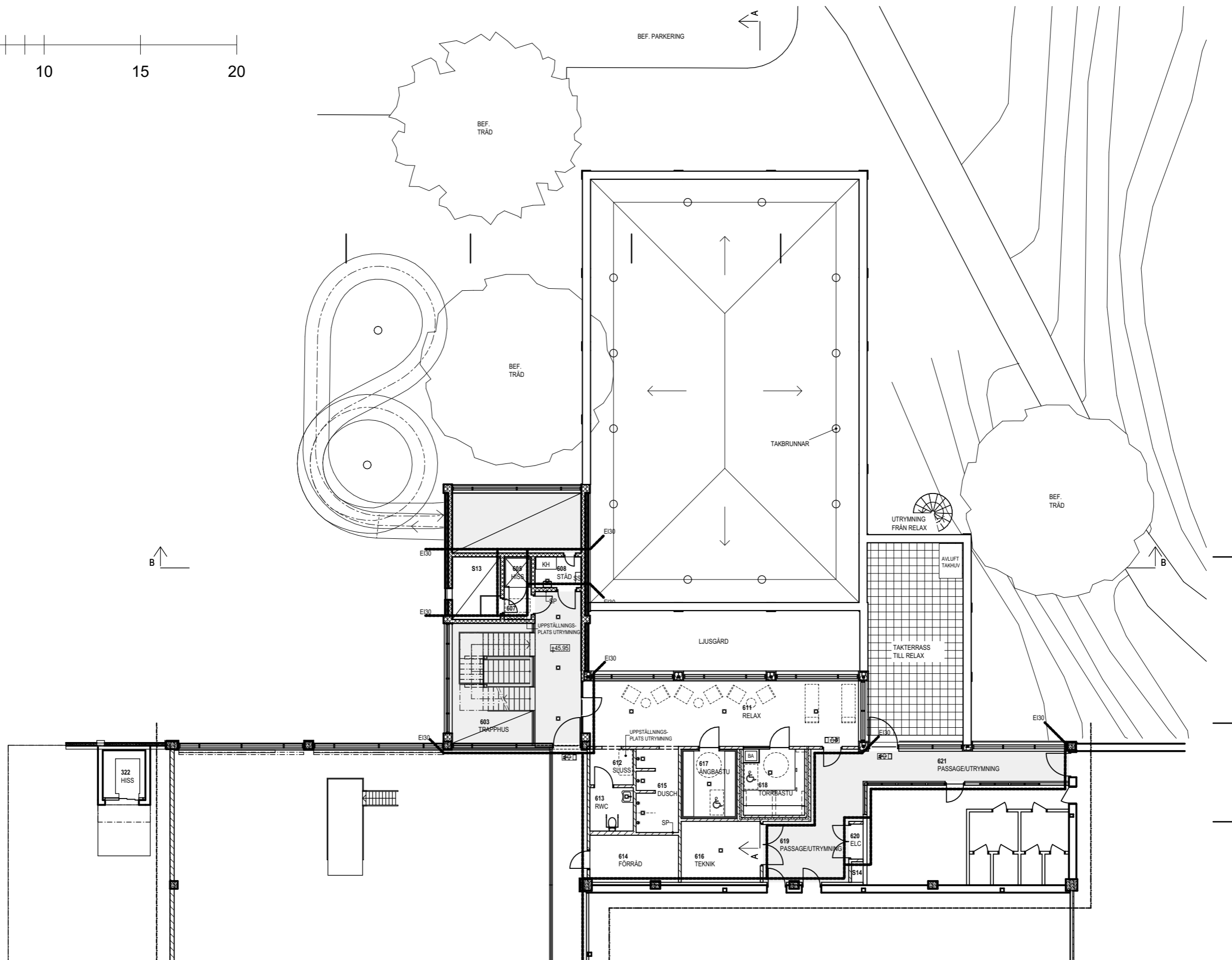
METER

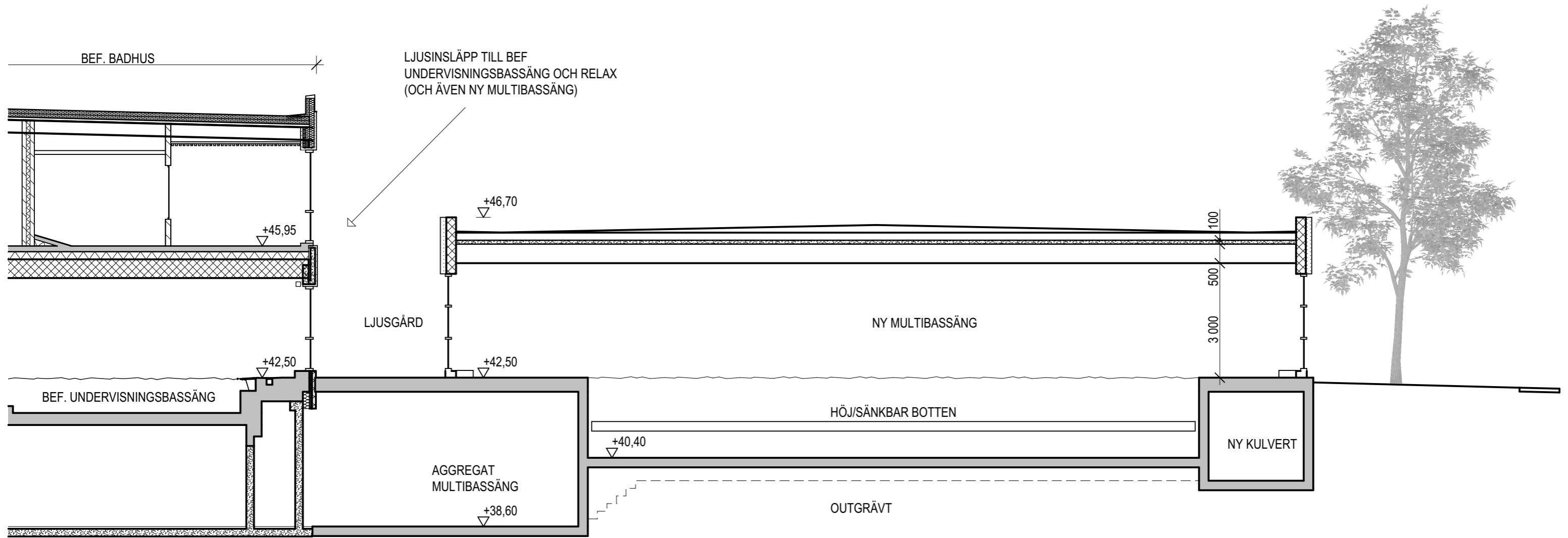


SKALA 1:200



METER





LJUSINSLÄPP TILL BEF. UNDERVISNINGSBASSÄNG OCH RELAX (OCH ÄVEN NY MULTIBASSÄNG)

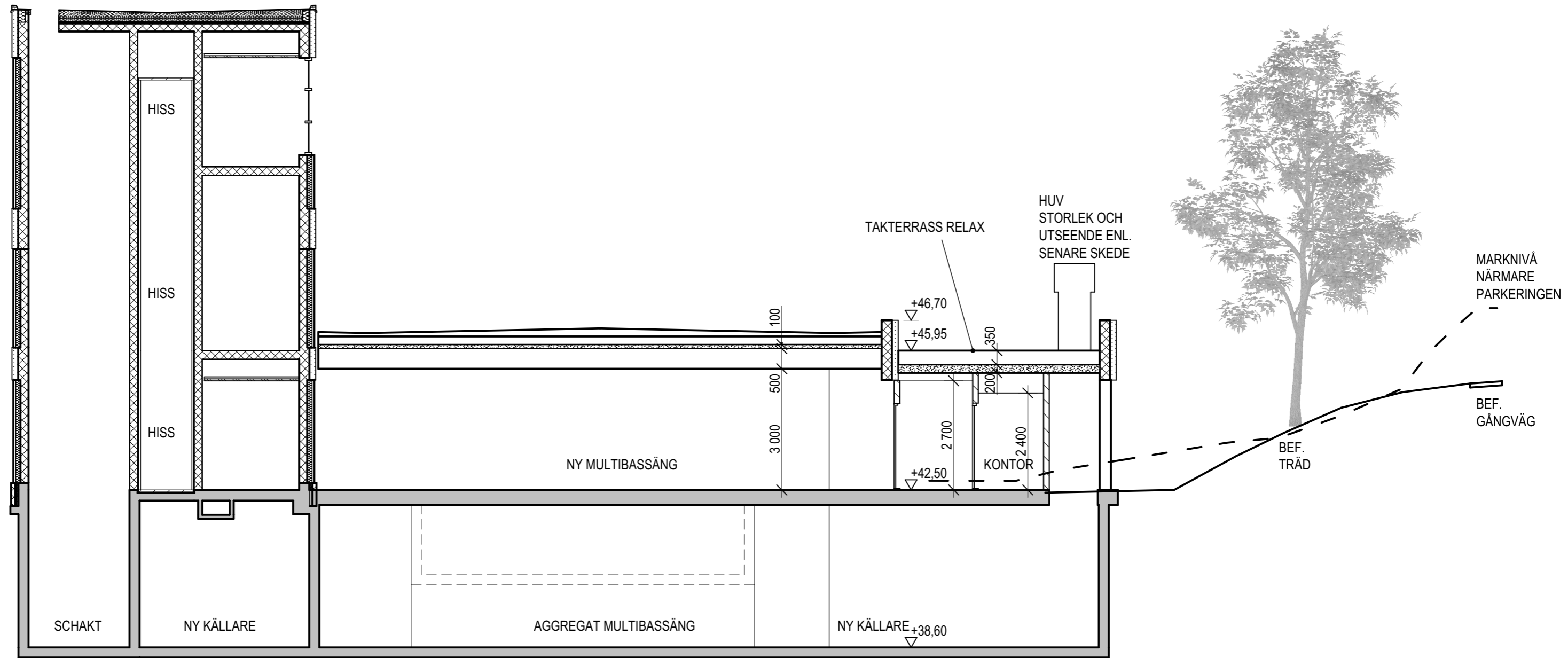
SKALA 1:100



NY MULTIBASSÄNG FRÖLUNDABADET

SEKTION A 1:100
Göteborg | 2022-11-28

RUTSCHBANETORN ENL. SYSTEMHANDLING



SKALA 1:100

